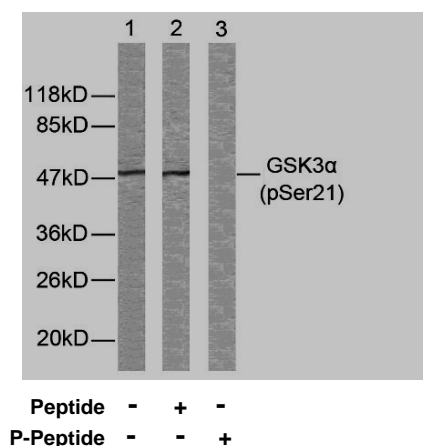


Rabbit anti GSK 3α (pSer21)

- Catalog Number:** pAP11007
Amount: 100µl (for 10 Western Blotting)
Form of Antibody: Rabbit IgG in phosphate buffered saline (without Mg^{2+} and Ca^{2+}), pH 7.4, 150mM NaCl, 0.02% sodium azide and 50% glycerol.
Storage/Stability: Store at -20°C/1 year
Immunogen: The antiserum was produced against synthesized phosphopeptide derived from human GSK3α around the phosphorylation site of serine 21 (T-S-S^P-F-A).
Purification: The antibody was affinity-purified from rabbit antiserum by affinity-chromatography using epitope-specific phosphopeptide. The antibody against non-phosphopeptide was removed by chromatography using non-phosphopeptide corresponding to the phosphorylation site.
Specificity/Sensitivity: GSK3α (phospho-Ser21) antibody detects endogenous levels of GSK3α only when phosphorylated at serine 21.
Reactivity: Human, Mouse, Rat
Applications: WB: 1:1000
Swiss-Prot No. : P49840
References: Barry FA, et al. (2003) FEBS Lett. 553(1-2): 173-178.
Koivisto L, et al. (2003) J Cell Sci. 116(Pt 18): 3749-3760.
Welsh G I, et al. (1996) Trends Cell Biol. 6:274-279.
Srivastava A K, et al. (1998) Mol. Cell. Biochem. 182: 135-141.



Western blot analysis of extracts from ovary cancer cells using GSK3α (phospho-Ser21) (pAP11007)

For Research Use Only

Contact & Ordering Information: Angio-Proteomie, 11 Park Drive, Suite 12, Boston, MA 02215, USA. Fax: (480) 247-4337, angioproteomie@gmail.com